



Headquarters

Unitronics (1989) (R[®]G) Ltd.
Unitronics Building, Airport City
P.O.B. 300, Ben Gurion Airport, Israel 70100
Tel: + 972 (3) 977 8888 Fax: + 972 (3) 977 8877

Printing Jazz Slides Tech Support Document 6/06

The keys on the operating panel of your controller are labeled by keyboard slides. Slides are strips of plastic that are inserted under the faceplate of the operating panel. Each controller is supplied with slides already in place.

You can customize your controller's operating panel keys by:

1. Designing your own slides, using the templates in this document.
2. Printing these slides, and cutting them out.
3. Removing the slides that are already under the faceplate.
4. Inserting your own slides under the faceplate.

You can label most of the controller's keys, with the exception of directional arrows, < ↵ > and < i > keys.

This document contains:

- Templates for printing your own slides.
- Instructions on removing and inserting slides.

About Printing Slides

You can print slides using an inkjet printer, on high-gloss film you have purchased for this purpose from an office goods supplier. Examples of suitable high-gloss film products include HP Premium High-gloss Film or Olympus Pictorico Photo Gallery High-Gloss White Film.

Note that such products are supplied in sheets; after you print the slides, you will have to cut them out.

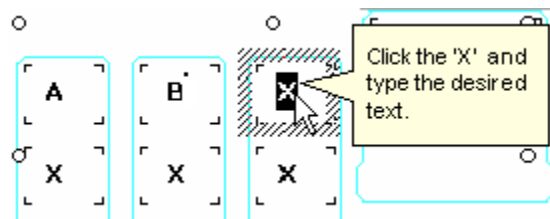
Using the Slide Templates

Page 3 contains slide templates.

Note that you can use the slide marked with the text 'Insert' to display a logo. However, any slide may be marked with text or images.

To insert text:

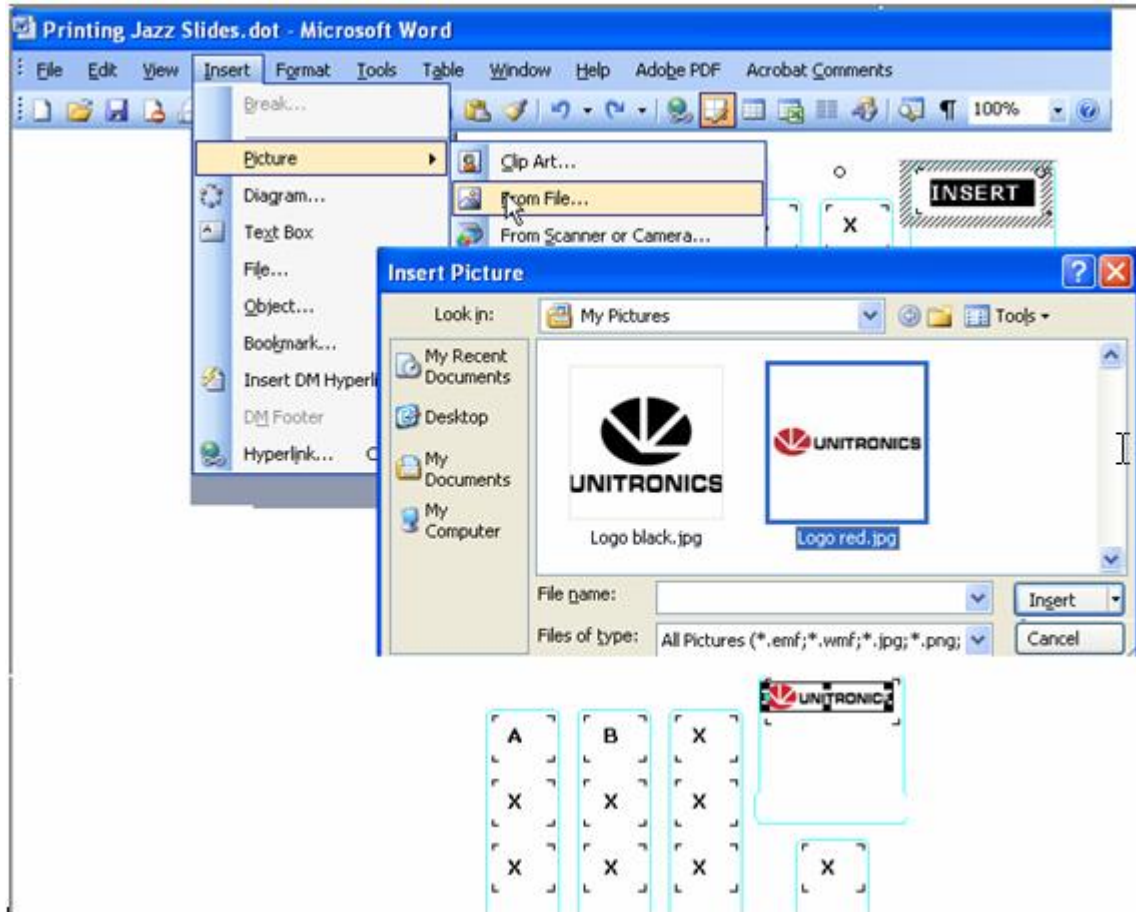
1. Click a text box and type in the desired text.



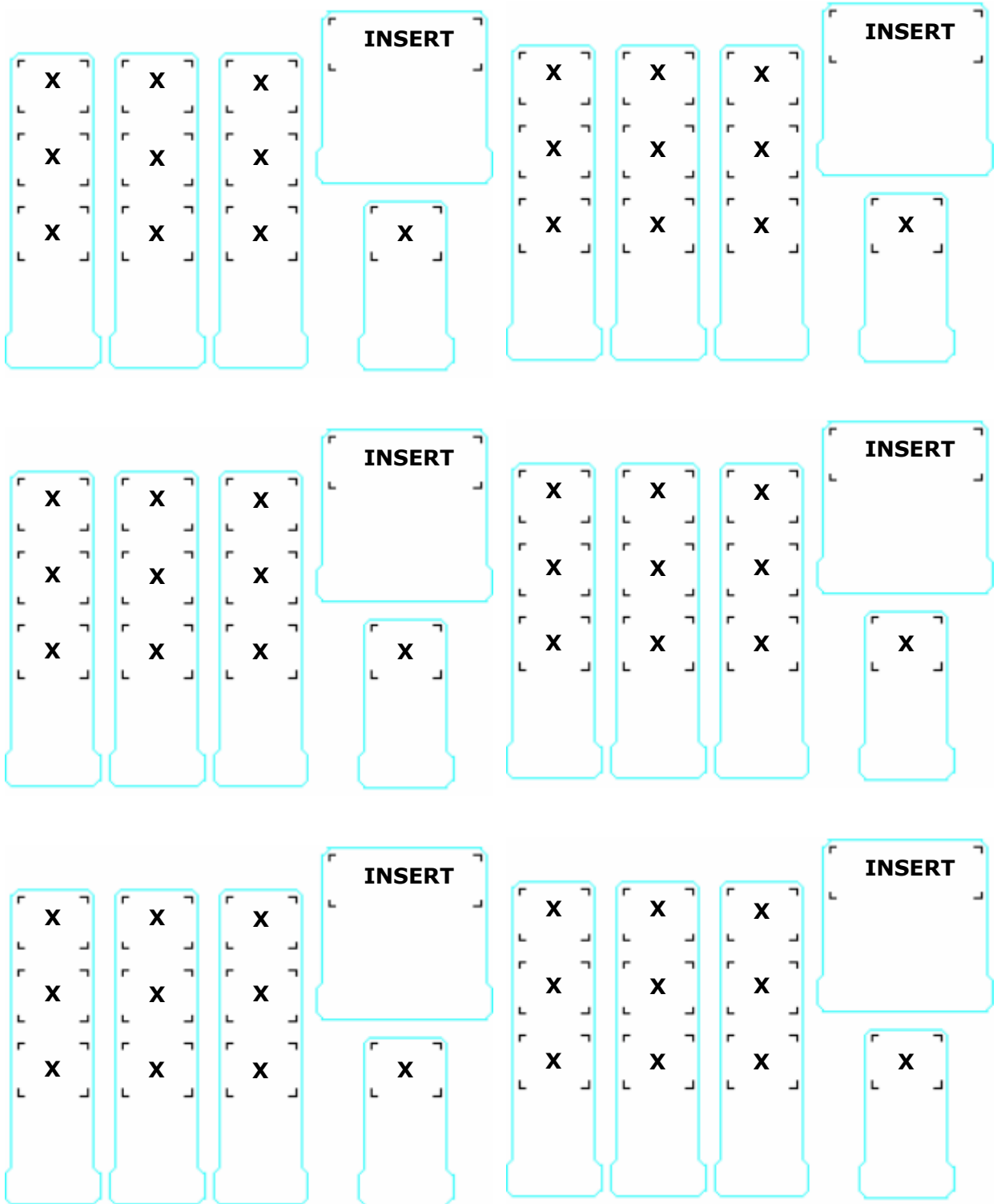
To insert an image:

1. Click a text box, and then select Insert Picture from the Insert menu.

To learn how to modify the size of a picture, refer to the Microsoft Word Help topic [Resize or Crop Graphics](#).



Slide Template



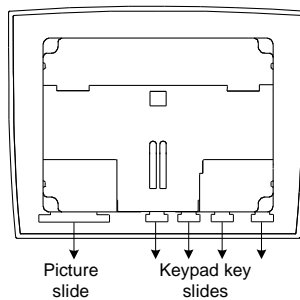
Removing a Slide

Note: Slides must be removed and inserted when the controller is not mounted.

Caution

Slides fit very tightly into the operating panel slots. This keeps the correct label over the correct key. When you remove or insert slides, work carefully, as excessive force may damage the slide.

Slides have tabs to allow you to pull the slide out more easily. These tabs are shown below.



1. Grasp the tab, with your fingers or using flat-bladed long-nose pliers.
2. Pull gently and steadily; the slide slowly slips out.

Inserting a Slide

- Gently and steadily, slip the slide into the slot.

The information in this document reflects products at the date of printing. Unitronics reserves the right, subject to all applicable laws, at any time, at its sole discretion, and without notice, to discontinue or change the features, designs, materials and other specifications of its products, and to either permanently or temporarily withdraw any of the foregoing from the market.

All information in this document is provided "as is" without warranty of any kind, either expressed or implied, including but not limited to any implied warranties of merchantability, fitness for a particular purpose, or non-infringement. Unitronics assumes no responsibility for errors or omissions in the information presented in this document. In no event shall Unitronics be liable for any special, incidental, indirect or consequential damages of any kind, or any damages whatsoever arising out of or in connection with the use or performance of this information.

The tradenames, trademarks, logos and service marks presented in this document, including their design, are the property of Unitronics (1989) (R"G) Ltd. or other third parties and you are not permitted to use them without the prior written consent of Unitronics or such third party as may own them

5414-0121-0