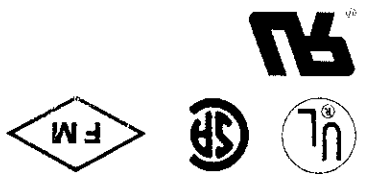


Models A-1S & A-10

Temperature Control

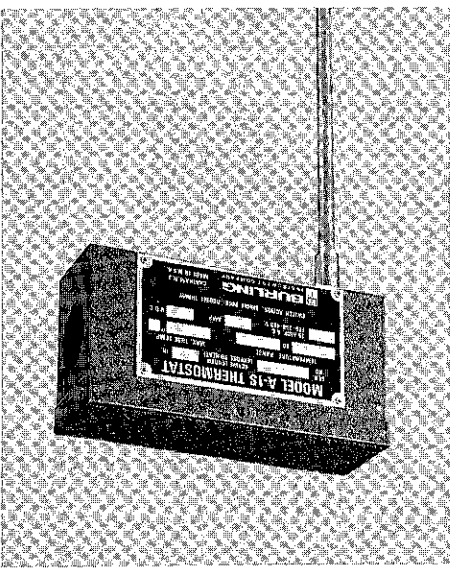
- Standard Series
- Single Switch
- NEMA 1 Enclosure
- Internal Temperature Adjusting Screw
- For Temperatures To 1700 F (925 C)
- F.M., C.S.A., & U.L. Listed
- U.L. Recognized (Model A-10 only)



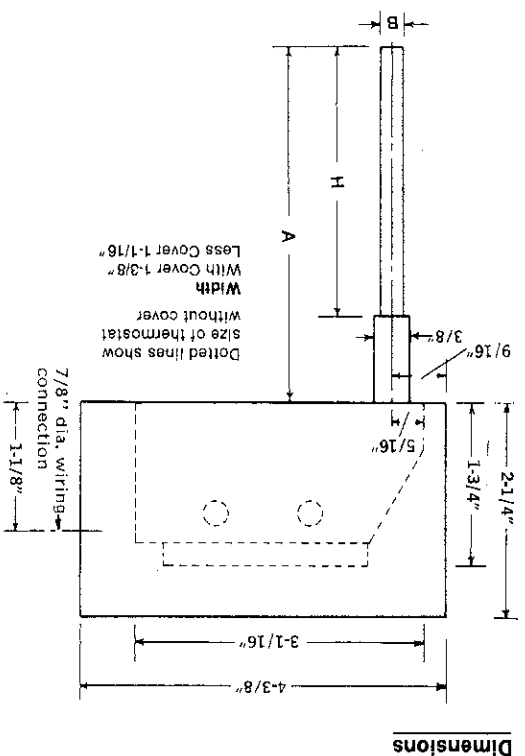
HOW TO ORDER

1. Model A-1S (with cover) or A-10 (without cover).
2. Select Code from specifications below.
3. Range in °F is standard. Specify if °C is required.
4. Add CSA, FM, UL-R, or UL-L if required (A-1S only).
5. FM Approval — Specify "F," show sealed factory temperature setting, and show manual reset switch (type J). See item 5.
6. UL-R Listing (temperature regulating service) — Specify "R."
7. UL-L Listing (temperature limiting service) — Specify "L" and show factory temperature setting.
8. UL Component Recognition (Model A-10 only) — Specify "R."

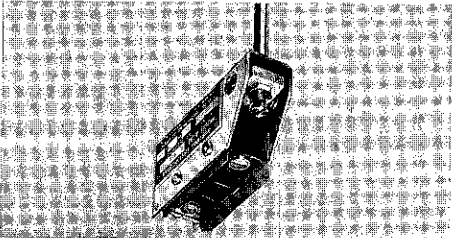
- a. CSA Certification — Specify "C."
- b. FM Approval — Specify "F," show sealed factory temperature setting, and show manual reset switch (type J). See item 5.
- c. UL-R Listing (temperature regulating service) — Specify "R."
- d. UL-L Listing (temperature limiting service) — Specify "L" and show factory temperature setting.
- e. UL Component Recognition (Model A-10 only) — Specify "R."



A-1S (with cover)



A-10 (less cover)



Model A-1 S or O — Code — Approvals (if required) Switch — Tube Part Number — Fitting — Specify "C" or "D" in inches if not in standard position. See page 19

Specify if required: Range in °C; Factory Temp. setting — °F.

Specifications of Model A-1S & A-10.

Approx. shipping weight: 1 1/2 lbs.

Code Number	Adjustable Temperature Range (°F)	Fahrenheit Centigrade (°C)	Temp. to which Tube can be exposed	Active Part				Inactive Part		Material	Part No.	Approx. Differential (total)	Standard Position of Bushing (C) or Union (D) (if req'd)	Drawing	Immersion Length ¹
				Length (H)	Dia. (B)	Material	Material	Overall Length (A)							
165	35-600	0-315	600 F	4 1/8"	3/8"	Stn. Stil.	Stn. Stil.	5"	163-10	5 F	C = 4 1/2", D = 8 1/2"	None	None	None	
166	35-600	0-315	600 F	5"	1/4"	Stn. Stil.	Stn. Stil.	2 1/2 F	164-20	2 1/2 F	C = 5 1/2", D = 8 1/2"	None	None	None	
160	35-600	0-315	600 F	5"	1/4"	Stn. Stil.	Stn. Stil.	2 1/2 F	164-10	2 1/2 F	C = 6 1/2", D = 5"	None	A-698-1	U = 5 1/4"	
167	35-600	0-315	600 F	5"	1/4"	Stn. Stil.	Stn. Stil.	2 1/2 F	164-30	2 1/2 F	C or D = 8 1/2"	None	A-698-1	U = 5 1/4"	
168	35-750	0-400	1200 F	5"	3/8"	Stn. Stil.	Stn. Stil.	9"	165-10	6 F	C or D = 6 1/2"	None	A-807	U = 5 3/4"	
169	35-1300	0-700	1400 F	3"	3/8"	Stn. Stil.	Stn. Stil.	8"	165-20	10 F	C = 6 1/2", D = 6 1/4"	None	A-807	U = 5 3/4"	
170	35-1300	0-700	1400 F	5"	3/8"	Stn. Stil.	Stn. Stil.	10"	165-30	6 F	C or D = 6 1/2"	None	A-807	U = 5 3/4"	
171	35-1700	0-925	1800 F	4"	3/8"	Stn. Stil.	Stn. Stil.	10"	160-0	10 F	C or D = 6 1/2"	None	None	None	

1. To be used only where full immersion length, "U", will be exposed to the heat. Otherwise, order a special thermowell.
2. Bushing or flange only. Union not available.
3. For wider differentials see page 21.