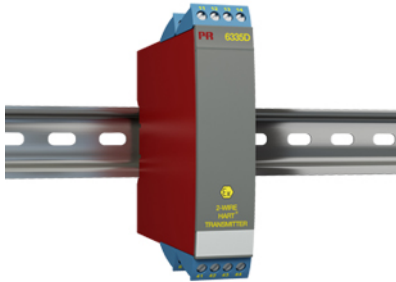


## 2-wire HART transmitter



### 6335D

- RTD, TC, Ohm, or mV input
- Extremely high measurement accuracy
- HART 5 protocol
- Can be installed in Ex zone 0
- 1- or 2-channel version



#### Application

- Linearized temperature measurement with Pt100...Pt1000, Ni100...Ni1000, or TC sensor.
- Difference or average temperature measurement of 2 resistance or TC sensors.
- Conversion of linear resistance variation to a standard analog current signal, for instance from valves or Ohmic level sensors.
- Amplification of a bipolar mV signal to a standard 4...20 mA current signal.
- Connection of up to 15 channels to a digital 2-wire signal with HART communication.

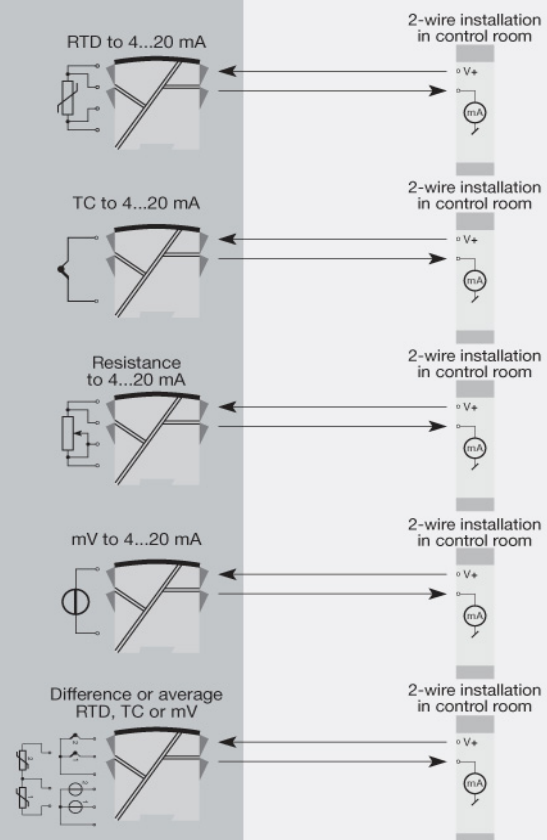
#### Technical characteristics

- Within a few seconds the user can program PR6335D to measure temperatures within all ranges defined by the norms.
- The RTD and resistance inputs have cable compensation for 2-, 3- and 4-wire connection.
- The 6335D has been designed according to strict safety requirements and is therefore suitable for application in SIL 2 installations.
- Continuous check of vital stored data for safety reasons.
- Sensor error detection according to the guidelines in NAMUR NE89.

#### Mounting / installation

- Mounted vertically or horizontally on a DIN rail. As the devices can be mounted without any distance between neighboring units, up to 84 channels can be mounted per meter.

#### Applications



**Order:**

Type	Galvanic isolation	Channels
6335D	1500 VAC : 2	Single : A Double : B

\*NB! Please remember to order CJC connectors type 5910Ex (channel 1) and 5913Ex (channel 2) for TC inputs with an internal CJC.

**Environmental Conditions**

Operating temperature.....	-40°C to +85°C
Storage temperature.....	-40°C to +85°C
Calibration temperature.....	20...28°C
Relative humidity.....	< 95% RH (non-cond.)
Protection degree.....	IP20

**Mechanical specifications**

Dimensions (HxWxD).....	109 x 23.5 x 104 mm
Weight (1 / 2 channels).....	145 / 185 g
DIN rail type.....	DIN EN 60715/35 mm
Wire size.....	0.13...2.08 mm <sup>2</sup> AWG 26...14 stranded wire
Screw terminal torque.....	0.5 Nm

**Common specifications****Supply**

Supply voltage.....	8.0...30 VDC
---------------------	--------------

**Isolation voltage**

Isolation voltage, test / working.....	1.5 kVAC / 50 VAC
---	-------------------

**Response time**

Response time (programmable).....	1...60 s
Voltage drop.....	8.0 VDC
Warm-up time.....	30 s
Programming.....	Loop Link & HART
Signal / noise ratio.....	Min. 60 dB
Accuracy.....	Better than 0.05% of selected range
Signal dynamics, input.....	22 bit
Signal dynamics, output.....	16 bit
Effect of supply voltage change.....	< 0.005% of span / VDC

**Input specifications****Common input specifications**

Max. offset.....	50% of selected max. value
------------------	----------------------------

**RTD input**

RTD type.....	Pt100, Ni100, lin. R
Cable resistance per wire.....	5 Ω (up to 50 Ω per wire is possible with reduced measurement accuracy)
Sensor current.....	Nom. 0.2 mA
Effect of sensor cable resistance (3-/4-wire).....	< 0.002 Ω / Ω
Sensor error detection.....	Yes

**Linear resistance input**

Linear resistance min...max.....	0 Ω...7000 Ω
----------------------------------	--------------

**TC input**

Thermocouple type.....	B, E, J, K, L, N, R, S, T, U, W3, W5
Cold junction compensation (CJC).....	< ±1.0°C
Sensor error detection.....	Yes
Sensor error current: When detecting / else.....	Nom. 33 μA / 0 μA

**Voltage input**

Measurement range.....	-800...+800 mV
Min. measurement range (span).....	2.5 mV
Input resistance.....	10 MΩ

**Output specifications****Current output**

Signal range.....	4...20 mA
Min. signal range.....	16 mA
Load (@ current output).....	≤ (Vsupply - 8) / 0.023 [Ω]
Load stability.....	≤ 0.01% of span / 100 Ω
Sensor error indication.....	Programmable 3.5...23 mA
NAMUR NE43 Upscale/Downscale.....	23 mA / 3.5 mA

**Common output specifications**

Updating time.....	440 ms
of span.....	= of the presently selected range

**Observed authority requirements**

EMC.....	2014/30/EU
----------	------------

**Approvals**

ATEX 2014/34/EU.....	KEMA 09ATEX0148
IECEx.....	KEM 10.0084X
FM.....	FM17US0013X
CSA.....	1125003
EAC Ex TR-CU 012/2011.....	RU C-DK.GB08.V.00410
SIL.....	Hardware assessed for use in SIL applications